

Lace Bobble Stitch

Lockdown

The Casting On Couch

BEGIN

Cast on a multiple of 10sts plus 5.

Row 1, wrong side: sl1 knitwise, purl to last st, sl1 knitwise.

Row 2: k2, * k3, k2tog, yf, k1, yf, sl1, k1, pssso, k2, rep*, k3.

Row 3: as row 1.

Row 4: k2, * k2, k2tog, yf, k3, yf, sl1, k1, pssso, k1, rep*, k3.

Row 5: as row 1.

Row 6: k2, * k1, k2tog, yf, k5, yf, sl1, k1, pssso, rep*, k3.

Row 7: as row 1.

Row 8: k1, m1, * K3tog, yf, k3, MB, k3, yf, rep *, sl1, k1, pssso, k2.

Row 9: as row 1.

Row 10: k2, * k1, yf, sl1, k1, pssso, k5, k2tog, yf, rep *, k3.

Row 11: as row 1.

Row 12: k2, * k2, yf, sl1, k1, pssso, k3, k2tog, yf, k1, rep *, k3.

Row 13: as row 1.

Row 14: k2, * k3, yf, sl1, k1, pssso, k1, k2tog, yf, k2, rep *, k3.

Row 15: as row 1.

Row 16: k2, * MB, k3, yf, K3tog, yf, k3, rep *, MB, k2.

Repeat rows 1 to 16.



VIDEO: <https://youtu.be/08XS3zBaOd8>

This Lace Stitch has a 10st and 16 row repeat. Cast on a multiple of 10sts plus 5. These additional 5 sts help create a selvedge, and they also ensure the stitch pattern looks symmetrical.

Rowan Softyak dk, shade 00245 and 4mm needles, were used in the making of this video. For similar results look for a ball band tension in stockinette stitch of 28sts and 30 to 32 rows to 10cm or 4in, using 4mm needles.

ABBREVIATIONS

k, (k2) - knit (knit 2)

k2tog - knit 2 sts together

k3tog - k 3 sts together

MB - Make bobble.

Into the same stitch:

K1, yf, k1, yf, k1. Turn & P5.

Turn & k2tog, k3. Turn & p2tog, p2. Turn k3tog.

m1 - pull up a horizontal bar that lies inbetween the stitch just worked and the stitch on the left needle. Place onto the left needle and knit. This forms an increase of one st knit wise.

pssso - pass slip st over

rep * - repeat the instructions within * and rep *

sl1 - slip 1

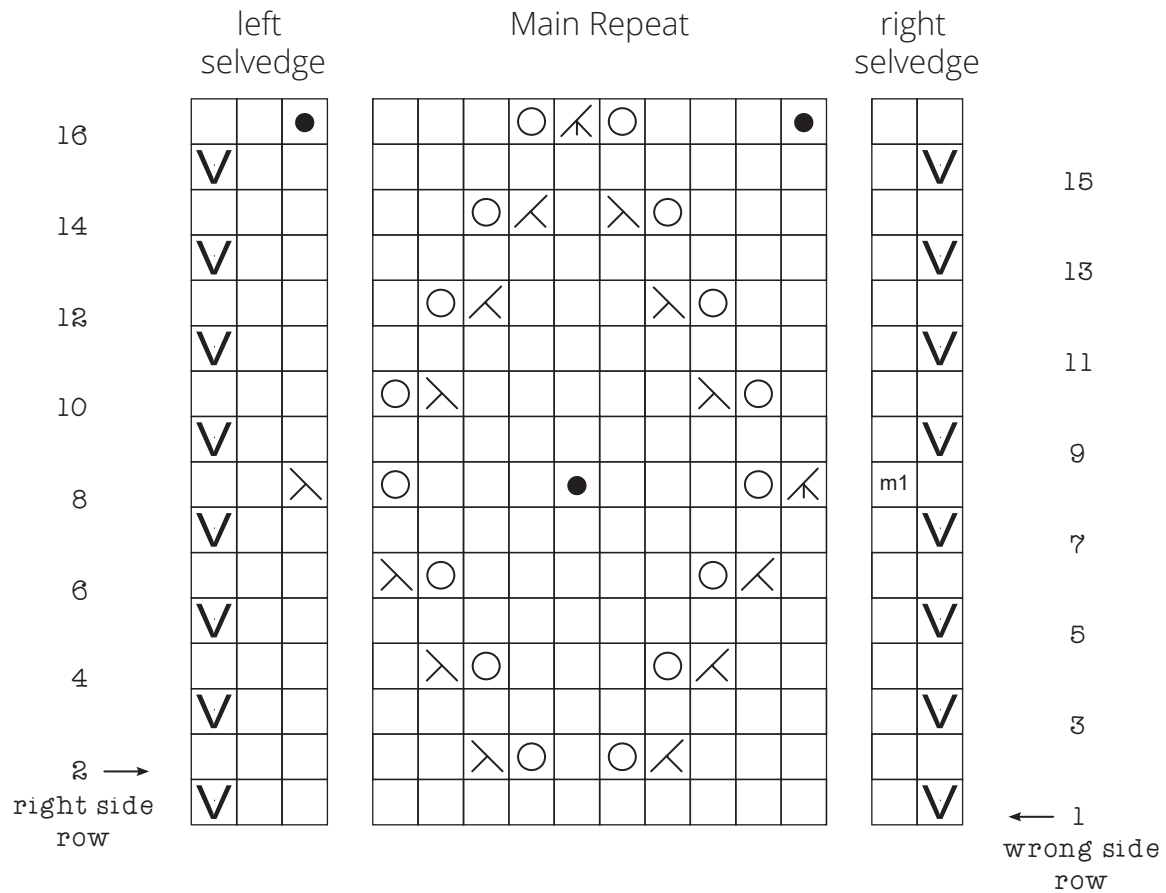
st - stitch

yf - yarn forward or yarn over

Lace Bobble Stitch

Lockdown

The Casting On Couch



Cast on a multiple of 10sts plus 5
Read the chart from right to left for the wrong side,
and left to right on the right side.

Stitch Key

- | | | | |
|--|---|--|---|
| | Knit on the right side,
purl on the wrong side | | Slip 1 |
| | Yarn forward or yarn over | | Make 1. Pull up a strand &
work into the back of it to
create a new stitch. |
| | Knit 2 together | | Make bobble. into the same stitch:
K1, yf, k1, yf, k1. Turn & P5. Turn &
k2tog, k3. Turn & p2tog, p2. Turn k3tog. |
| | slip 1, knit 1, pass
the slipped stitch over | | |
| | knit 3 together | | |

This Knitting Pattern & Video Guide Is For Personal & Domestic Use Only.
Not For Commercial Purposes.
All Rights Reserved By The Casting On Couch.
© The Casting On Couch