

The casting On Couch

All Over Lace Chart For Mohair Scarf

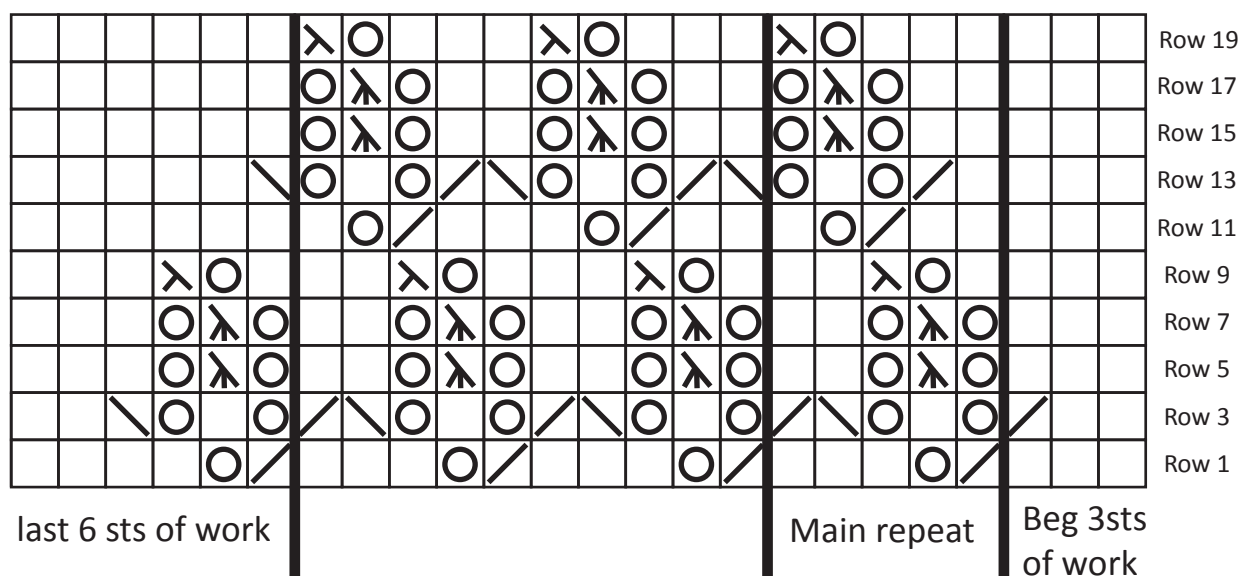
This is a 5 stitch and 20 row repeat.

Cast on in multiples of 5 stitches plus allow 9sts for edging.

Adjust the width of your scarf by adding or subtracting in multiples of 5.

The scarf in the video tutorial uses 34sts and 5.5mm needles.

For best results look for a ball band tension in stockinette stitch of 16 sts and 22 rows per 10cm/4ins of work.



Work chart right to left on the right side of your work. Purl all alternate wrong side rows.
Last row of the repeat ends on row 20.

STITCH KEY

-  ssk - Slip, slip, knit
-  k2tog
-  k2togtbl
-  sk2p
-  yo
-  knit



Many thanks to my pattern writer Maria Clube
www.thecastingoncouch.com
 © The Casting On Couch 2012
 All rights reserved